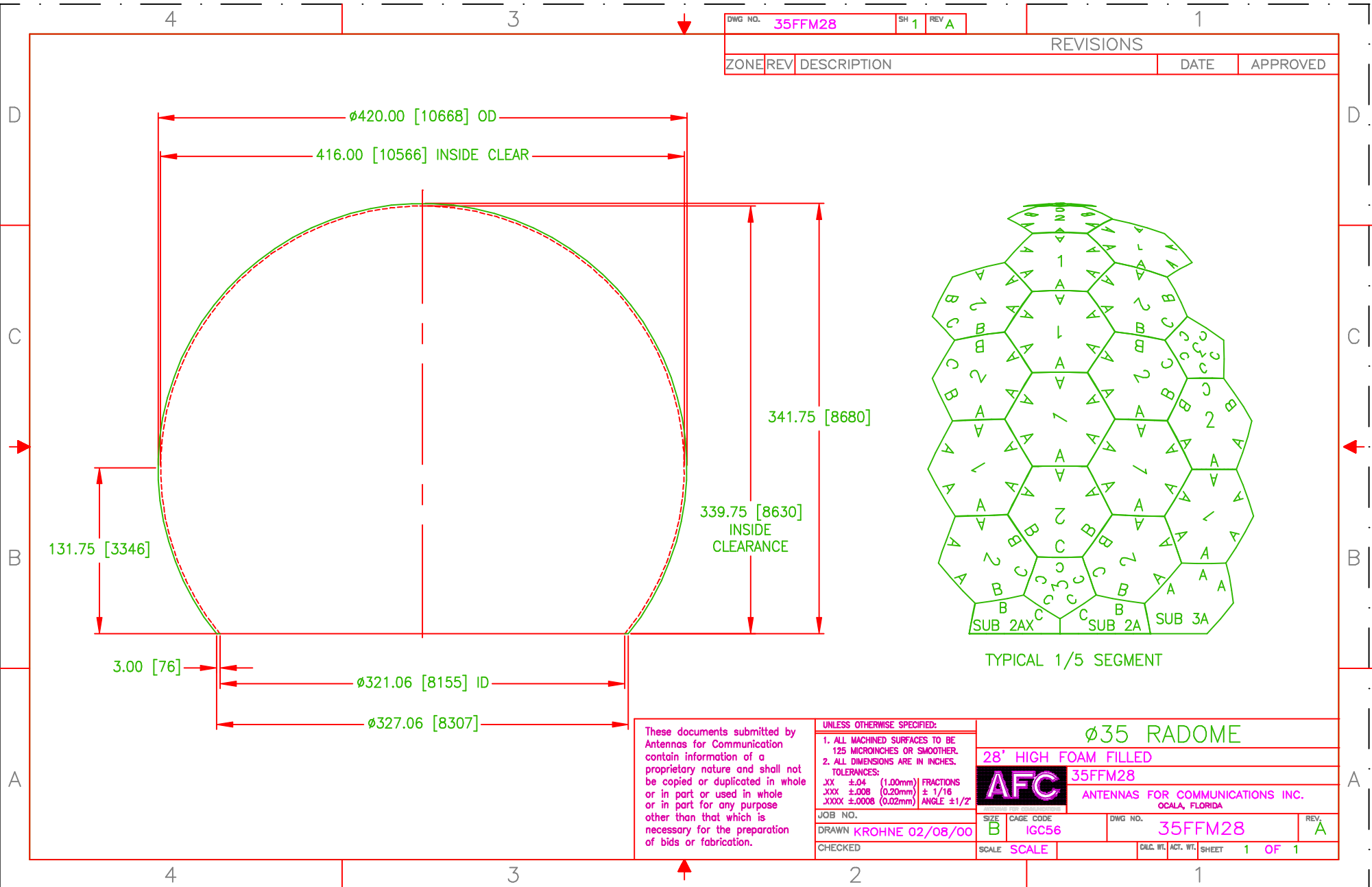


DWG NO. 35FFM28 SH 1 REV A

REVISIONS

ZONE	REV	DESCRIPTION	DATE	APPROVED
------	-----	-------------	------	----------



341.75 [8680]
339.75 [8630]
INSIDE CLEARANCE

TYPICAL 1/5 SEGMENT

These documents submitted by Antennas for Communication contain information of a proprietary nature and shall not be copied or duplicated in whole or in part or used in whole or in part for any purpose other than that which is necessary for the preparation of bids or fabrication.

UNLESS OTHERWISE SPECIFIED:	
1. ALL MACHINED SURFACES TO BE 125 MICRONS OR SMOOTHER.	
2. ALL DIMENSIONS ARE IN INCHES.	
TOLERANCES:	
.XX ±.04 (1.00mm)	FRACTIONS
.XXX ±.008 (0.20mm)	± 1/16
.XXXX ±.0008 (0.02mm)	ANGLE ±1/2°
JOB NO.	
SIZE B	CAGE CODE IGC56
DRAWN KROHNE 02/08/00	
CHECKED	

Ø35 RADOME

28' HIGH FOAM FILLED

AFC 35FFM28
ANTENNAS FOR COMMUNICATIONS INC.
OCALA, FLORIDA

SIZE B	CAGE CODE IGC56	DWG NO. 35FFM28	REV. A
SCALE SCALE		DWG. WT. ACT. WT.	SHEET 1 OF 1